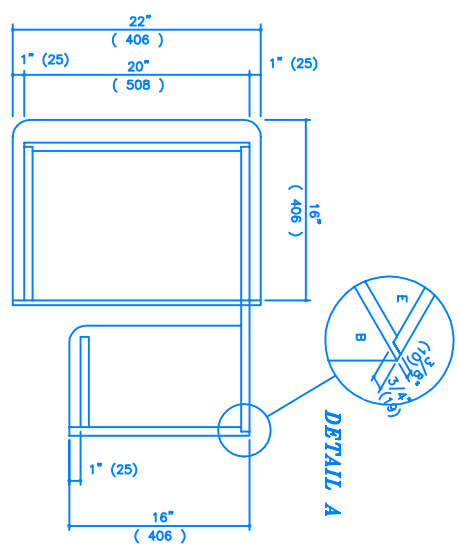


- 7) The desk is now ready to assemble. Dry fit pieces E, A, B and F together to ensure they fit snugly. Run a bead of glue along the rabbit joint of B, and nail to E, through B, with 1 1/4" finishing nails. Run a bead of glue down the rabbit joints on A, and nail to pieces E and F similarly. Run a bead of glue along the top of shelf supports J and attach shelf CK to supports using 1 1/4" nails. Attach GNM to D by running a bead of glue along the top edge of N, turning D upside down, and nailing through N into D with 1 1/4" nails. Run a bead of glue along the top edge of P and the rear edge of M, nail the outer edge of D to P with 1/4" nails, and then nail B to M with 1 1/4" nails. Turn D to P with 1/4" nails from the inside. Finally nail through top of D into G with 2" finishing nails. Centre the desktop on the desk, and attach the hinges to the front of piece A (Detail B). 2" from edge. Allow glue to set for 24 hours.

- 8) By turning the desk on it's side, nail in the 6 nail glides (Detail C). Set and fill all nails, and sand the project. Paint with interior enamel. Do not use leaded paint for projects that will be around young children.

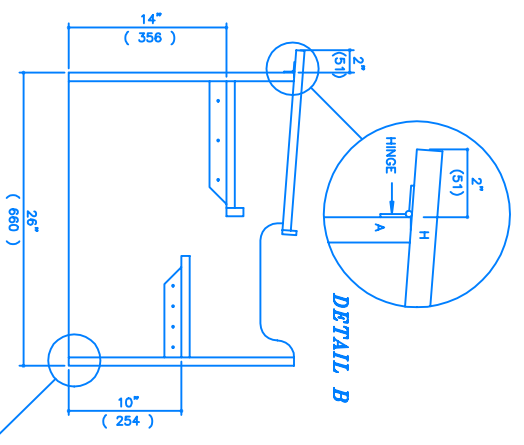
On Materials
 This project is designed to be painted with enamel paint to withstand a child's use. For this reason, the plywood used should be expensive. If you are using a quality wood, use edgegrain or bullnose the edges and finish with lacquer or varnish. You may wish to add slow closing lid hardware to prevent your child's fingers from being banged by the top.

**RABBET DETAIL FOR
 PIECES A, B, AND F.**

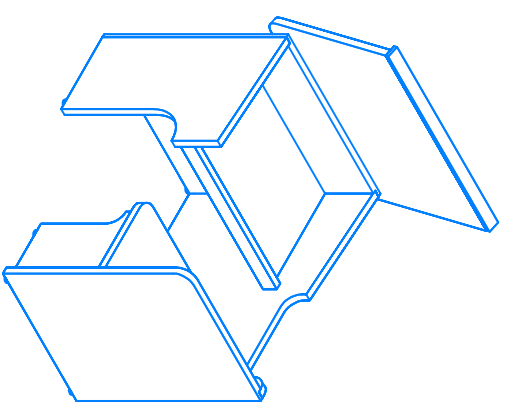


DETAIL A

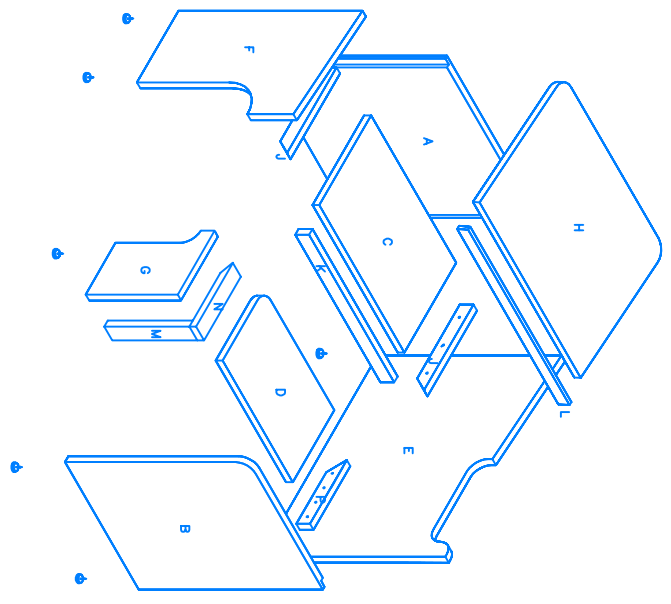
DETAIL B



DETAIL C



EXPLODED VIEW



FINISHED PROJECT